



Sutter Buttes Regional Land Trust

SPRING 2022

CONSERVING A WAY OF LIFE

A big part of what we do year-round revolves around our conservation work, protecting agricultural land and habitat areas from being developed. We do this by working with voluntary landowners to place a conservation easement over their property, which limits development and ensures the land remains as farmland or open space forever. The land trust works one-on-one with each landowner to customize their agreement and secure the funding to cover the cost of the easement. From start to finish, an agreement can take up to 4 years to complete, but once it's in place it will protect the conservation values of the property into perpetuity. In the end, the landowner is paid for the development rights and is able to ensure the property will never be developed, protecting important farmland, critical habitat, open space, and the rural character of our region. Over the past 20 years, the land trust has seen a steady increase in development slowly creeping into our region as more and more people seek homes in less populated, rural communities like ours. There have been a number of interested landowners that have approached the land trust looking for options to protect their property and family heritage. Many of those landowners have gone on to make a financial commitment to the land trust and have begun the process of placing a conservation easement on their property.

In 2018, Sutter Buttes Regional Land Trust (SBRLT) signed a Memorandum of Understanding with the Danna Family to help protect their family farm in south Yuba County. Last year, our staff and board focused on finalizing the last few pieces of the Danna Farms Agricultural Conservation Easement, which

will protect 876 acres of orchard and habitat areas. Funding for the project, in the amount of \$5,430,000, was secured in 2019 from the California Department of Conservation, Sustainable Agricultural Lands Conservation Program which is part of California Climate Investments, a statewide initiative that puts billions of Cap-and-Trade dollars to work reducing greenhouse gas emissions, strengthening the economy, and improving public health and the environment – particularly in disadvantaged communities. Also secured in 2019 was an award of \$1,810,000 from the United States Department of Agriculture, Natural Resources Conservation Service, Agricultural Lands Easement Program. The Danna Farms project is in its final review by funders and is expected to close later this year.

In 2019, SBRLT began working with the Magnolia Ranch landowners to protect 952 acres of valuable riceland and important waterfowl habitat in south Yuba County. The project will not only conserve farmland and open space but also protect Beale Air Force Base from encroachment, ensuring that incompatible land uses do not impact the installation's mission, security, and training. Funding for the project, in the amount of \$14,369,500, was secured in 2021 from the Sustainable Agricultural Lands Conservation Program. Also secured in early 2022 was an award of \$400,000 from the Office of the Secretary of Defense, Department of Defense, Readiness Environmental Protection Integration (REPI) Program Funds and \$800,000 from the United States Air Force REPI Program Funds. The Magnolia

Continued

CONSERVING A WAY OF LIFE continued

Ranch project is currently seeking additional easement acquisition funding and is anticipated to close in spring 2024.

Between 2019 and 2022, Sutter Buttes Regional Land Trust has been awarded a total of \$22,809,500 to protect 1,828 acres of working farmland and habitat that would otherwise likely be developed, their conservation values lost forever. We have recently engaged with other interested landowners, and we are excited about these upcoming conservation opportunities. The land trust is incredibly grateful and humbled to be entrusted to facilitate these agreements with our local landowners, as well as state and federal partners, all of whom are working to protect our way of life and create a balanced landscape that is better able to bounce back from change while also supporting the community that relies on its resources. These success stories motivate us even more to keep protecting the land and places we love. There's still a lot more work to do, but we hope you will share in our recent accomplishments. Thank you to all our landowners, partners, donors, members, and friends for your support. We couldn't do this work without you.

Lisa Lindman
Executive Director



**United States
Department of
Agriculture**

Natural Resources Conservation Service

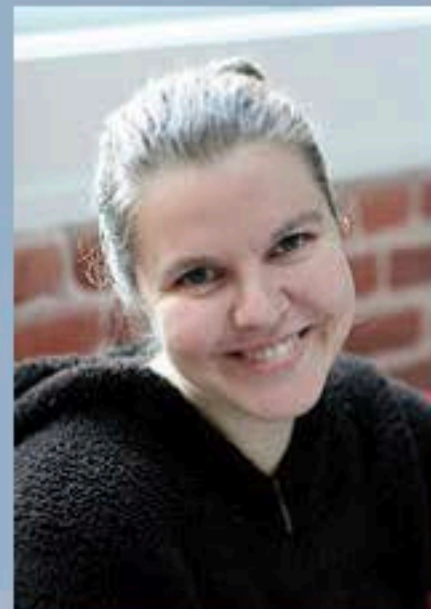


PLEASE WELCOME



MARIA HANHARDT

Maria Hanhardt serves as Administrative Manager for SBRLT. She currently lives in Sutter County with her husband and two children. She has done volunteer work and assisted with event planning with non-profit organizations in the Yuba-Sutter area. Maria enjoys nature and visiting state and national parks whenever possible.



RACHEL REIN

Rachel Rein is the newest Board Director. She is a citizen scientist, civic activist, writer, educator, and artist. She is currently pursuing an MFA. Her passions include genealogical DNA testing, data visualization, deep dive research, digital documentation, gaming, hand-coding HTML and CSS, and discovering new fruit to try. Rachel volunteers with California Heritage: Indigenous Research Project (CHIRP), the non-profit of the Nisenan Tribe, and serves on the Editorial Board of her local newspaper. She produces a local voter guide each election and created LandEmpty, which helps consumers find reusable alternatives to disposable products.

IN MEMORY OF

Pete Sands
Loretta Dean
Dorothy Rae Coats

If you would like to make a donation in honor or memory of someone, please contact us today at info@sutterbutteslandtrust.org or 530-755-3568

YOU HOLD THE WINNING CARD IN OUR FUTURE!

With hotter, dryer summers, longer fire seasons, more severe winter thunderstorms followed by drought, all of our weather seems so much more severe than it used to be. This past season, the farmers around us had to deal with an unseasonably severe freeze during the almond blossom time.

Running sprinklers minimizes the severity of the frost, but our local farmers can already tell how it will impact next fall's crop.

What happens next doesn't just fall on them. It is incumbent that we all follow the environmental effects of severe weather, and we all get involved in contributing to the success of our neighboring farms and ranches. Their family businesses feed us. They feed America.

It's not us. Or them. It's impacting ALL of us. Only by working together will we create the resilience that we need to keep prevailing through these tumultuous weather extremes.

Most of the region's farmers have worked these grounds for four or five generations, and they are deeply connected to the landscape. They want to keep working the land in the future as they have been in the past.

You, our constituency, hold the trump card.

There are thousands of you, of us, out there.

Our farming and ranching neighbors already know that good farming practices sequester CO₂ in the soil. And we know that modest lifestyle changes on our part can minimize our contributions to CO₂ emissions into the atmosphere.

Here's where land trusts factor in. Conservation easements are a tool that compensates farmers and ranchers to not develop their lands, but to maintain the farming and ranching practices as they always have. They can get paid to agree to keep doing what they have always been doing!

Support us. Become a member of the Sutter Buttes Regional Land Trust. And take a hike with the Middle

Mountain Interpretive Hikes into the Buttes to see what California was like 100 to 150 years ago. The Sutter Buttes and surrounding region begs to be preserved.

Your involvement with us supports family farms, preserves Yuba, Sutter, and Colusa counties' lovely rural landscape, and helps to stabilize climate change. We all win!

What you choose to do can make a difference.

Michael Hubbardt
Vice President, Director

MEMBERSHIP BENEFITS

If it weren't for the generous donations from our members, the Sutter Buttes Regional Land Trust wouldn't be able to continue to make a difference in our region. Because of YOUR direct support, SBRLT has been able to provide managing and monitoring services for 4 easements and 2 in-fee properties, with more currently in negotiations.

Do you want to hike the Sutter Buttes? Many of our membership levels come with discounts and gift certificates for Middle Mountain Interpretive Hikes who provide guided hike tours most weekends from October through May. Gift certificates can also be given as gifts.

Join & Support Today. Together we can protect the land that defines our heritage.

LEVEL	MEMBERSHIP BENEFIT
\$25 Donor	Newsletters and Event Info
\$50 Friend	10% off a hike, Event Info, Newsletters
\$100 Associate	One hike certificate, Event Info, Newsletters
\$250 Sponsor	Two hike certificates, Event Info, Newsletters
\$500 Conservator	Four hike certificates, Event Info, Newsletters
\$1,000 Patron	Six hike certificates, Event Info, Newsletters
\$2,500 Benefactor	1 charter hike for 10, Event Info, Newsletters
\$5,000 Corporate	2 charter hikes for 10, Event Info, Newsletters

Credit Cards accepted on our website. Or you can contact us at info@sutterbutteslandtrust.org or 530-755-3568.

Sutter Buttes Regional Land Trust
17th Annual Calendar Photo Contest
 Calling All Photographers, Including Students in K-12!
 Deadline for submissions will be Friday, April 29, 2022. Winners contacted by May 23, 2022
 We are looking for unique and new perspectives of the region. Some examples are:

- The Sutter Buttes
- Farmers, Ranchers, Farming Activities
- Native Fauna and Flora
- Geological Features
- Waterfowl Habitats
- Unique Natural or Weather Aerials or Landscapes
- Agricultural Heritage or Landscapes

For more information contact us at:
 (530) 755-3568 or
 Photos@sutterbutteslandtrust.org






Excellence · Trust · Permanence



Find us on Facebook at
www.facebook.com/SutterButtesLandTrust



SUTTER BUTTES REGIONAL LAND TRUST
 P.O. Box 3359
 Yuba City, CA 95992

OUR MISSION

The mission of the Sutter Buttes Regional Land Trust is to protect and maintain the natural and agricultural resources of the Sutter Buttes and the surrounding region for present and future generations.

BOARD OF DIRECTORS

Joe Reusser, President, Director
 Mike Hubbartt, Vice President, Director
 Dr. Emma Blackthorne, Treasurer, Director
 Julie Stark, Secretary, Director
 Babs Cotter, Director
 Margit Sands, Director/Landowner
 Rachel Rein, Director

SUPPORT

Lisa Lindman, Executive Director
 Maria Hanhardt, Member Services Coordinator

ADVISORS

Brian Hausback, Geology Advisor
 Gene Trapp, Biological Advisor
 Stan Wright, Biological Advisor
 David Wyatt, Biological Advisor
 Spencer Morrison, Financial Advisor

CONTACT US

You can reach us by:
 Telephone: 530-755-3568
 Website: www.SutterButtesLandTrust.org
 Mail: PO Box 3359, Yuba City, CA 95992
 Email: info@sutterbutteslandtrust.org

