

Background

For the past 25 years the Sutter Buttes Regional Land Trust (SBRLT) has been a community based organization working toward the ongoing preservation of natural resources, agriculture lands and open space within the Sutter Buttes and the surrounding region (Sutter, Yuba and Colusa counties). In August 2015, SBRLT was recognized as an accredited land trust through the Land Trust Alliance. The accreditation seal represents excellence, trust, and permanence. Becoming an accredited land trust shows a commitment to land conservation and creating a sustainable organization.

Mission

The Sutter Buttes Regional Land Trust works to protect the land and natural resources of the Sutter Buttes and the surrounding region for present and future generations.



Values

- Protect the natural, cultural, geological, historical, and scenic qualities of the Sutter Buttes.
- Identify prime agricultural lands and natural areas that preserve and enhance the unique characteristics of the region surrounding the Sutter Buttes.
- Build partnerships with landowners, community leaders, and developers to balance conservation with economic growth, flood protection, and water quality to help plan better communities.
- Respect landowners' rights and provide information to those who want to conserve their land.
- Increase awareness of the Sutter Buttes Regional Land Trust's dedication to education, interpretation, and land conservation programs.
- Maintain an efficient, effective, and sustainable organization.

Hunting, Outdoor Recreation, & Habitat

The area is known for its hunting, outdoor recreation, and wide open spaces. These habitat areas and open spaces provide food, cover, nesting areas, and migration corridors for wildlife as well as places for the community to enjoy. The



Butte Sink, Gray Lodge, and surrounding rice fields provide habitat for over 1 million waterfowl each winter during migration. The unique and distinctive Sutter Buttes is admired and loved by many, and for good reason. Sometimes

referred to as the "world's smallest mountain range", its origins are actually volcanic. The Buttes are the largest single contiguous habitat in the central valley, which is in stark contrast to the farms and open space of the surrounding valley.

Agriculture

California's northern central valley (Sutter, Yuba and Colusa Counties) has a rich history of working the land and agriculture continues to be a large component of the local economy. This region encompasses close to 1.4 million acres of prime agriculture lands that contribute to a \$1.5 billion dollar industry for the region. With 1:4 people employed directly or indirectly in agriculture, it provides important jobs for our local communities. Leading commodities are rice, walnuts, plums, peaches, seeds, and milk.

Preservation of Place

The Sutter Buttes, agricultural land, and habitat define the region and the people who live, work, and play here. We all love the northern central valley and the Sutter Buttes. We've put down roots and established memories, routines, and favorite places. Preservation of place is about protecting and nurturing those places that connect us to each other and the land. The land trust has an opportunity to preserve important habitat areas, open space and agricultural resources that make up the fabric of our region. The agricultural and natural resources of the area contribute to our economy, health and well-being, making it crucial that these resources be protected from development. The land trust is dedicated to conservation and creating a healthy and ecologically sustainable landscape that can continue to provide benefits to the community and region as a whole.

Get Involved!

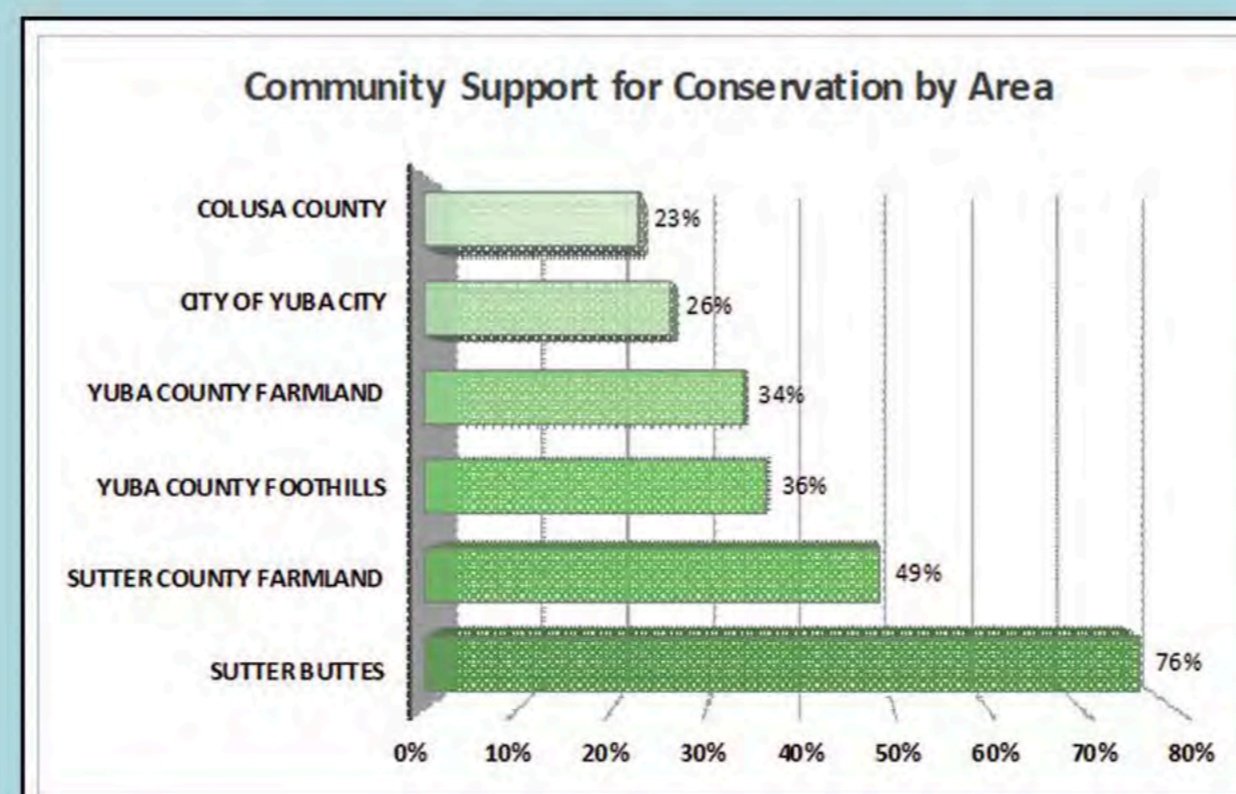
We change and tear up so much of the land, it's good to be able to save some of it. Help us do something purposeful for the community and the land....volunteer, donate or become a member!

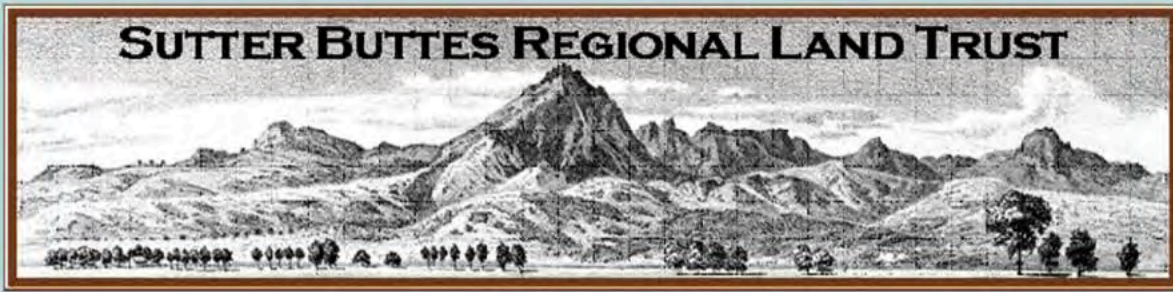
Contact us at info@sutterbutteslandtrust.org to learn more.

Interested Landowners

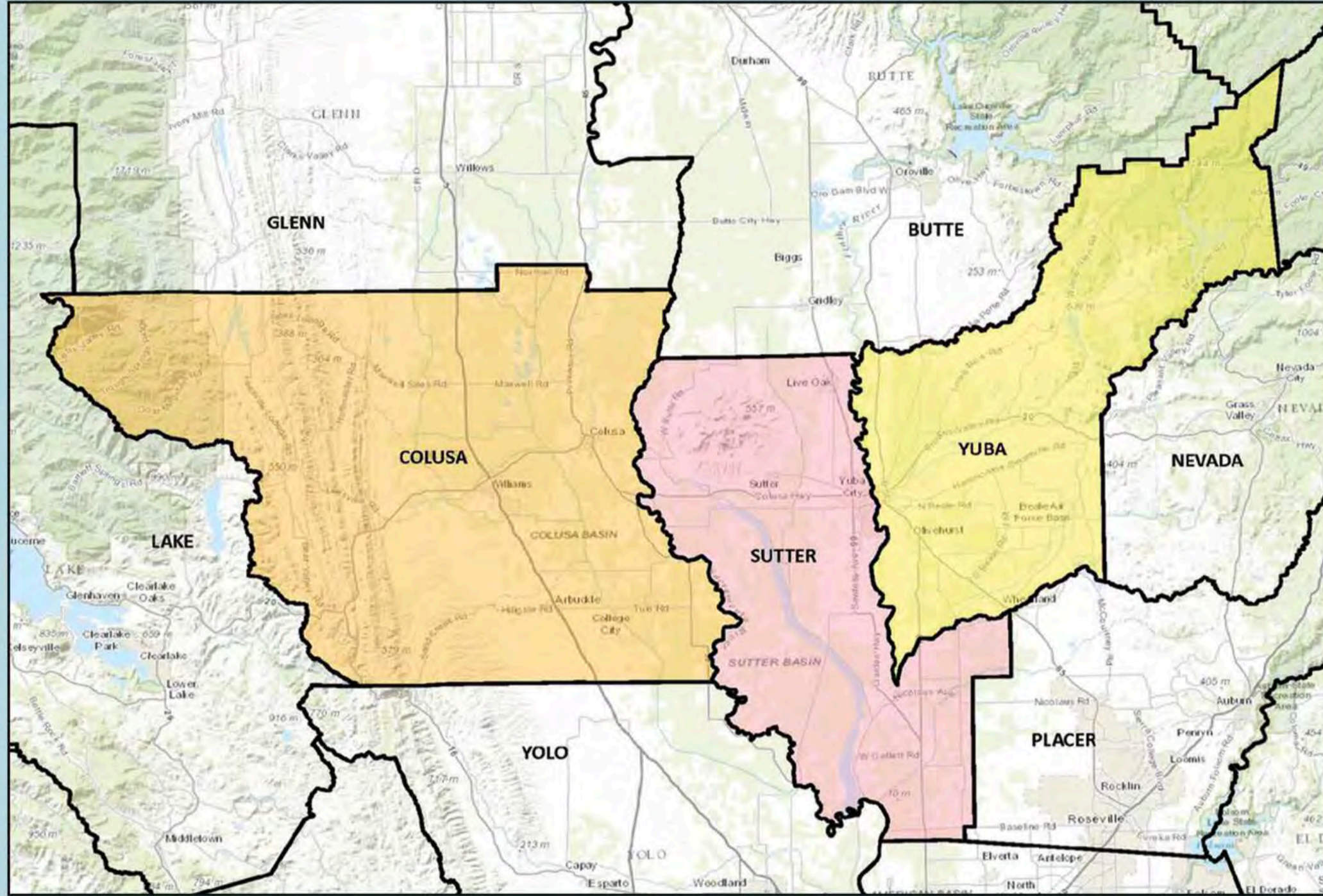
Property is more than real estate for many landowners. It is a part of the family heritage, a legacy, to be passed on to future generations. Placing an easement on your property can permanently protect specific resources, such as agriculture or habitat areas by limiting future development and still allowing for other types of uses. Economic benefits of an easement include reduced estate, property, and income taxes.

If you are interested in an easement on your property and would like more information, please call us at (530) 755-3568 or stewardship@sutterbutteslandtrust.org.





Regional Service Map



County	Prime Farmland	Farmland of Statewide Importance	Unique Farmland	Farmland of Local Importance	Grazing Land	Total Agricultural Uses	Agriculture as a % of Total	Urban and Built-Up Land	Other Land	Water	Total Non-Agricultural	Non-Agricultural as a % of Total	Total County Area
Colusa	196,320	2,046	120,316	236,013	9,161	563,856	76%	5,142	169,484	1,911	176,537	24%	740,393
Sutter	162,673	105,395	17,752		53,538	339,358	87%	13,560	34,513	1,888	49,956	13%	389,314
Yuba	39,485	10,829	32,224		141,509	224,047	54%	14,026	167,303	6,629	187,958	46%	412,015
Total	398,478	1,118,270	170,292	236,013	204,208	1,127,261	73%	32,728	371,300	10,423	414,451	27%	1,541,722
<i>Categories Shown as % of Total Acres of 3 County Region</i>	26%	8%	11%	15%	13%	73%		2%	24%	1%	27%		100%

PO Box 3359
 Yuba City, CA 95992-3359
 (530) 755-3568
info@sutterbutteslandtrust.org
www.SutterButtesLandTrust.org

